

# Beretta

*New Jaguar Pistol*

Caliber .22 L.R.

- Parts List
- Instructions
- Maintenance
- Specifications

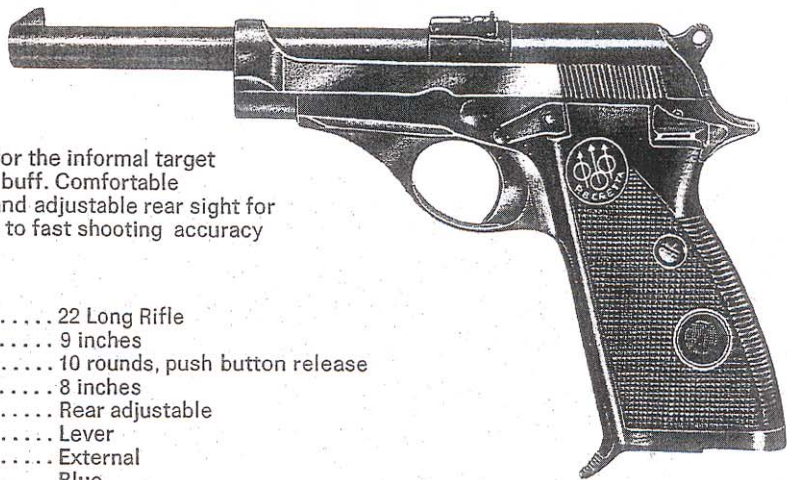
---

**Armi Beretta** S.p.A. - 25063 Gardone Valtrompia, Brescia (Italy)

SOLE U.S.A. DISTRIBUTOR: J. L. GALEF AND SONS, INC., NEW YORK

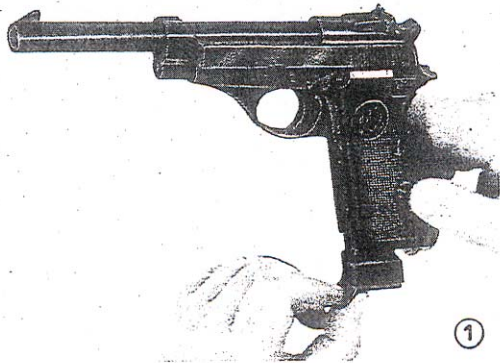
# *New Jaguar* Beretta .22 L.R. Caliber - mod. 101

The ideal general purpose pistol for the informal target shooter, hunter, camper or range buff. Comfortable wrap-around grips, target barrel and adjustable rear sight for windage and elevation contribute to fast shooting accuracy

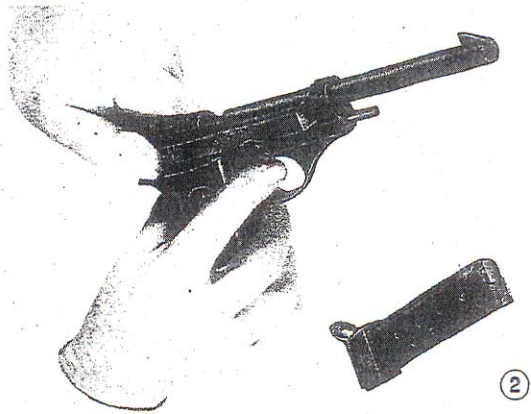


## Specifications:

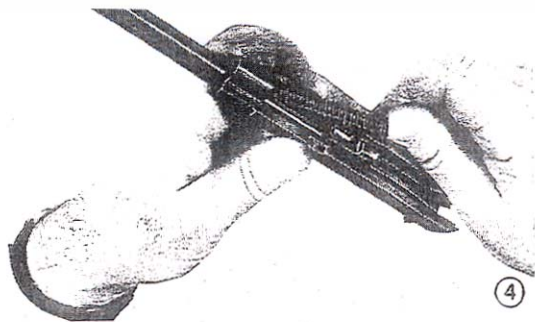
Caliber .....	22 Long Rifle
Barrel .....	9 inches
Magazine .....	10 rounds, push button release
Length Overall .....	8 inches
Sights .....	Rear adjustable
Safety .....	Lever
Hammer .....	External
Finish .....	Blue
Weight .....	App. 22 ounces
Stock .....	Two piece wrap-around, checkered
Slide .....	Stays open on last shot



- 1 - Remove the magazine by depressing the release button (Figure 1).
- 2 - Pull slide back fully and check chamber for loaded round. (Carefully cock hammer first in order to ease backward movement).
- 3 - Holding the pistol in the right hand, pull slide to the rear and align slide lock with recess in slide. (Figure 2).



- 4 - With the right thumb, rotate slide lock toward the muzzle.
- 5 - Pull slide forward and remove from the frame. (Figure 3). (Should it be difficult to rotate slide lock, tap barrel muzzle on a wooden surface two or three times in order to relieve pressure between slide lock and barrel lug. If you should encounter further difficulty, pull slide back as far as possible and release several times in order to ease forward motion).

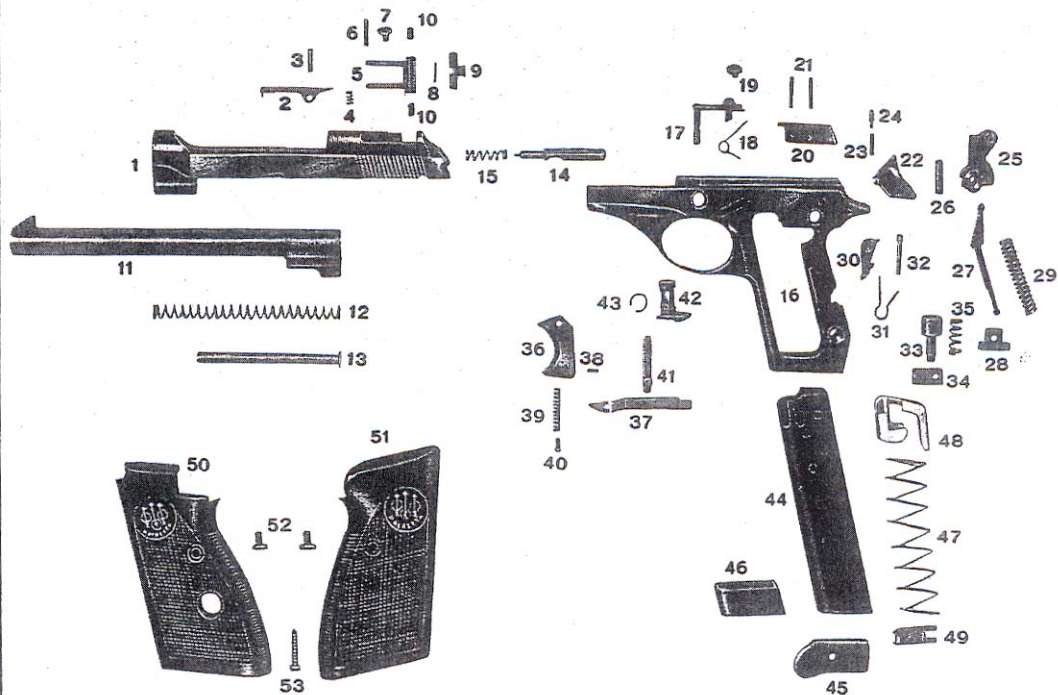


- 6 - In order to remove barrel from the slide assembly, release recoil spring and guide. (Spring and guide are under tension . . . remove carefully). The barrel may now be withdrawn through the underside of the slide (Fig. 4).
- 7 - No further disassembly is recommended except by a competent gunsmith.
- 8 - Assemble in reverse order.

TAKE CARE OF YOUR GUN, IT WILL LAST LONGER AND YOU WILL GET THE BEST RESULTS. KEEP IT CLEAN AND LUBRICATED THROUGHOUT. AFTER EACH FIRING, CLEAN BARREL TO AVOID OXIDATION.



NEW JAGUAR BERETTA .22 L.R. CALIBER - MOD. 101



**COMPONENT PARTS****NEW JAGUAR BERETTA .22 L.R. CALIBER - MOD. 101**

- |                            |                                 |
|----------------------------|---------------------------------|
| 1 - Slide                  | 28 - Hammer strut nut           |
| 2 - Extractor              | 29 - Hammer spring              |
| 3 - Extractor pin          | 30 - Sear                       |
| 4 - Extractor spring       | 31 - Sear spring                |
| 5 - Rear sight base        | 32 - Sear pin                   |
| 6 - Rear sight pin         | 33 - Magazine release button    |
| 7 - Rear sight screw       | 34 - Magazine release           |
| 8 - Notch pin              | 35 - Magazine release spring    |
| 9 - Notch                  | 36 - Trigger                    |
| 10 - Notch adjusting screw | 37 - Trigger bar                |
| 11 - Barrel                | 38 - Trigger pin                |
| 12 - Recoil spring         | 39 - Trigger bar spring         |
| 13 - Recoil spring guide   | 40 - Trigger bar spring plunger |
| 14 - Firing pin            | 41 - Disconnecter               |
| 15 - Firing pin spring     | 42 - Slide lock                 |
| 16 - Frame                 | 43 - Slide lock circlip         |
| 17 - Slide catch           | 44 - Magazine box               |
| 18 - Slide catch spring    | 45 - Magazine bottom            |
| 19 - Slide catch screw     | 46 - Spacer                     |
| 20 - Ejector               | 47 - Magazine spring            |
| 21 - Ejector pin (2)       | 48 - Magazine follower          |
| 22 - Safety                | 49 - Magazine bottom plate      |
| 23 - Safety spring         | 50 - Left grip                  |
| 24 - Safety spring plunger | 51 - Right grip                 |
| 25 - Hammer                | 52 - Grip screw (2)             |
| 26 - Hammer pin            | 53 - Grip securing screw        |
| 27 - Hammer strut          |                                 |